



Site / Booking Office :
S.No. 3, Kharadi, Opp. Zensar IT Park, Off Mundhwa Kharadi Road, Pune : 411014.
website : www.silvana.in email : sales@silvana.in

FOR BOOKINGS CONTACT
+91 7745896464 / 7745896565

The brochure is purely conceptual and not a legal offering. No of floor may be revised in light of amendment in development control rules. Developers reserve right to amend the layout, plans, elevations, specifications and amenities.

The new icon for luxurious living.



2 BHK Luxurious Apartments

@ Kharadi



silv - 14/02/16/0373



Have you always wanted a home, close to conveniences but away from the hustle and bustle..?

Presenting **Saakaar Silvana** – a well planned residential project that meets your needs and exceeds your expectations.

Coming up in Kharadi, opp. Zensar IT Park,

Saakaar Silvana symbolizes your dream home in every way.

The project offers elegant 2 BHK Apartments with modern amenities and best-in-class specifications.

Inspired by the idea of a happy family life, **Saakaar Silvana** offers you higher comfort, more privacy and better security.

Premium quality fittings give you a sense of elegance, while the thoughtful layout makes every room feel more spacious.

Whether inside the house or out within the premises, the emphasis on quality and attention to detail is simply unmistakable.



Exclusive 2 BHK Apartments

Welcome To Graceful Living





Planned to excel

In-depth, thoughtful planning is the strong foundation on which the project of **Soakaar Silvana** stands. The smart design optimizes space and the feel of more space is indeed delightful. Also, the layout allows for more natural light.

With its strategic location, **Soakaar Silvana** offers you open views from every room.






saakaar
Silvana



A location that spells convenience

Peaceful locality with clean-n'-green surroundings Good civic infrastructure (roads, water supply, etc.) Closely located to reputed educational institutes Excellent connectivity to IT Parks, Nagar Road, Kalyani Nagar, Magarpatta City, Solapur Road. A quick drive to services/facilities like hospitals, malls multiplex, supermarkets, banks, etc.





Discover happy and healthy living



- ❑ Decorative Main Entrance with security Cabin
- ❑ Landscaped Garden with sitouts
- ❑ Party lawn
- ❑ Meditation / Yoga area
- ❑ Relaxing space for Senior citizens
- ❑ Children play area with play equipments
- ❑ Open Amphitheater
- ❑ Rain Water Harvesting
- ❑ Vermiculture
- ❑ Backup for Lift and Common areas
- ❑ Fire Fighting Equipment
- ❑ Gazebo
- ❑ CCTV Surveillance



2 BHK Apartment

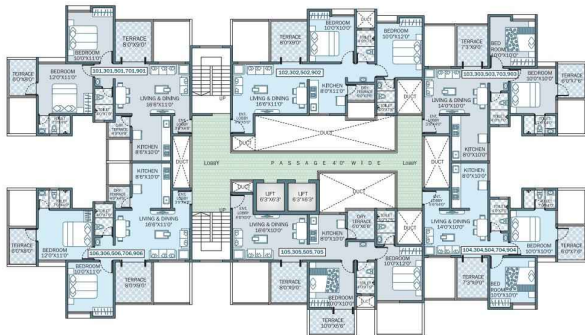
- 1 LIVING
- 2 TERRACE
- 3 KITCHEN
- 4 DRY BALCONY
- 5 DINING
- 6 BEDROOM
- 7 COMMON BATHROOM
- 8 M. BEDROOM
- 9 M. TOILET
- 10 TERRACE



2 BHK Apartment

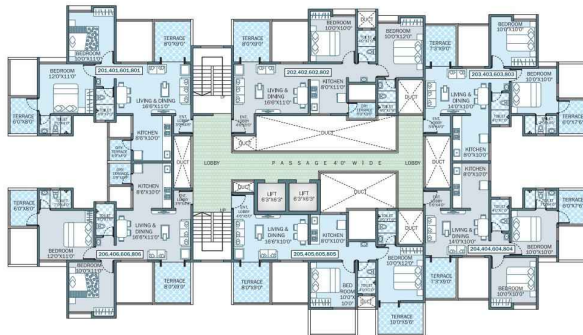
- 1 LIVING
- 2 TERRACE
- 3 DINNING
- 4 KITCHEN
- 5 DRY BALCONY
- 6 BEDROOM
- 7 TERRACE
- 8 COMMON BATHROOM
- 9 M. BEDROOM
- 10 M. TOILET





**TYPICAL
1ST, 3RD, 5TH, 7TH & 9TH
FLOOR PLAN**

FLAT NOs	CARPET	TERRACE	SALEABLE
101.301.501.701.901 106.306.506.706.906	622	140	1029
102.302.502.902	617	93	959
103.303.503.703.903 104.304.504.704.904	540	106	872
105.305.505.705	585	165	1013



**TYPICAL 2ND, 4TH,
6TH, 8TH FLOOR PLAN**

FLAT NOs	CARPET	TERRACE	SALEABLE
201.401.601.801 206.406.606.806	622	142	1031
202.402.602.802	617	93	959
203.403.603.803 204.404.604.804	540	106	872
205.405.605.805	584	141	979



Specifications that elevate your lifestyle

STRUCTURE

- Earthquake resistant R.C.C. Frame structure

BRICKWORK

- 6" thick fly ash brick / block work internally & externally

PLASTER

- External sand faced cement plaster
- Internal Neeru finished plaster

FLOORING

- 600mm X 600mm vitrified flooring for entire flat
- Anti-skid flooring for toilets, bath and attached terraces

DOORS

- All doors decorative laminated hot pressed flush doors
- Granite door frame for Toilets / Bath / WC
- Wooden door frame for main door & bedroom doors

WINDOWS

- Powder coated aluminium windows with mosquito net
- Granite sill for windows

PAINTING

- Internal oil bound distemper
- External acrylic paint

KITCHEN

- Granite kitchen atta with SS Sink
- Designer wall tiles upto lintel level
- Provision for exhaust fan

TOILETS / BATH

- Designer glazed wall tiles upto lintel level
- Hot & cold mixer unit

PLUMBING

- Concealed plumbing internally
- Branded CP sanitary fittings

ELECTRICAL

- Branded modular switches
- Adequate electrical point with MCB
- TV & Tele. point in living room
- AC point in M.Bedroom

LIFT

- Automatic standard make lifts with power back-up





Saakaar Associates is one of Pune's leading construction houses that rightly prides

itself on its landmark projects, with many exciting ventures on the drawing board.

Working as a team and building dream homes for over 25 years now, today

Saakaar Associates is one of the most preferred names for anyone who dreams of

having a modern, well-crafted and comfortable home but, it's not just the

affordability of our homes that attracts people to us; it's also the innovation and

convenience which goes beyond the interiors of each apartment.

